



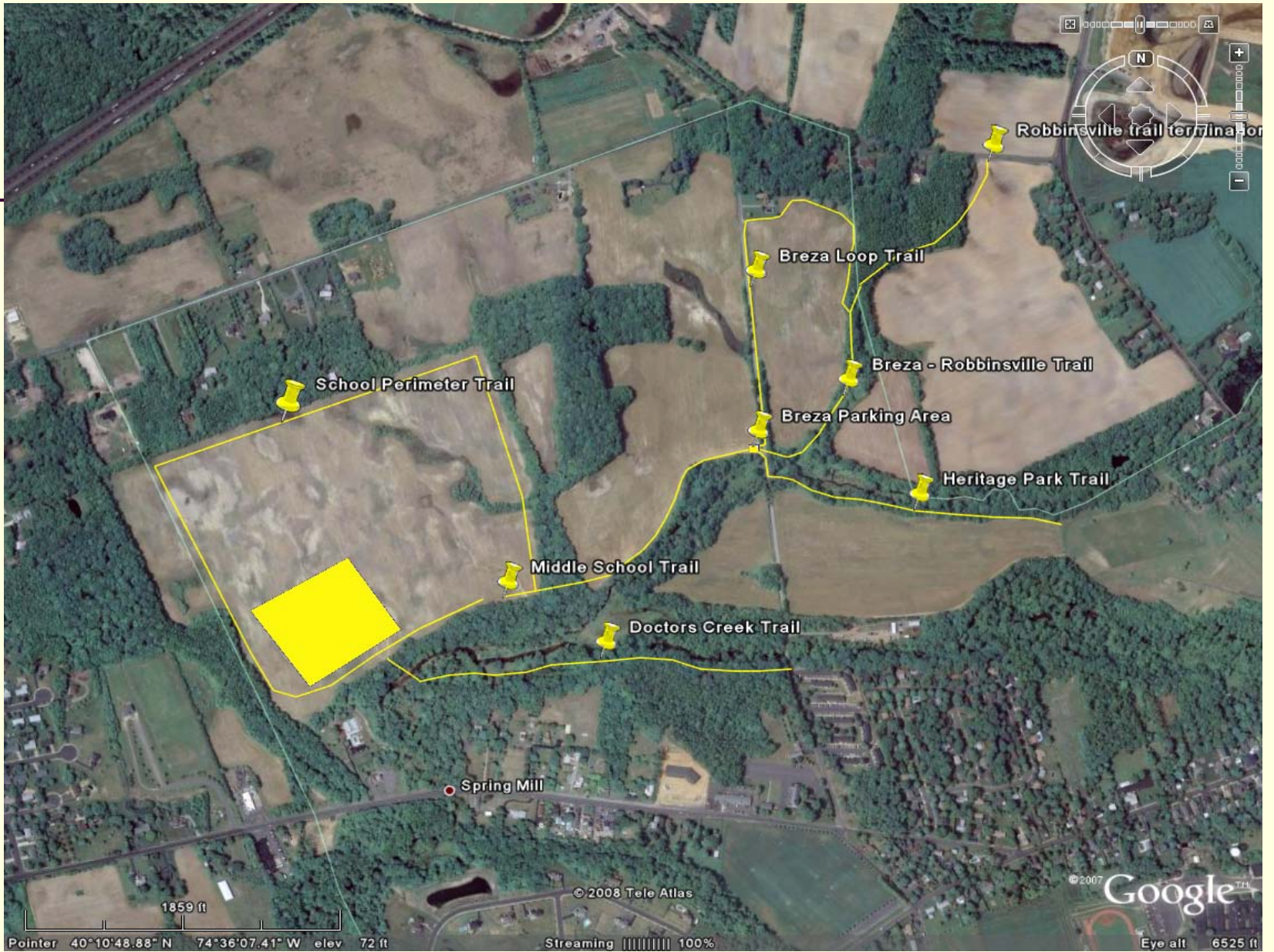
*Proposal for Trail Complex linking
newly preserved Breza tract to
Heritage Park and the new Middle
School*

Why do we need this?

- As the Breza preservation was partially funded by Green Acres money, there is a requirement to install some form of passive recreation on the property.
- Existing trails already exist in Heritage Park.
- To provide a connection from the new Middle School to the population center.
- Can help to integrate newly preserved Kulp property into preservation network.

Phased Approach

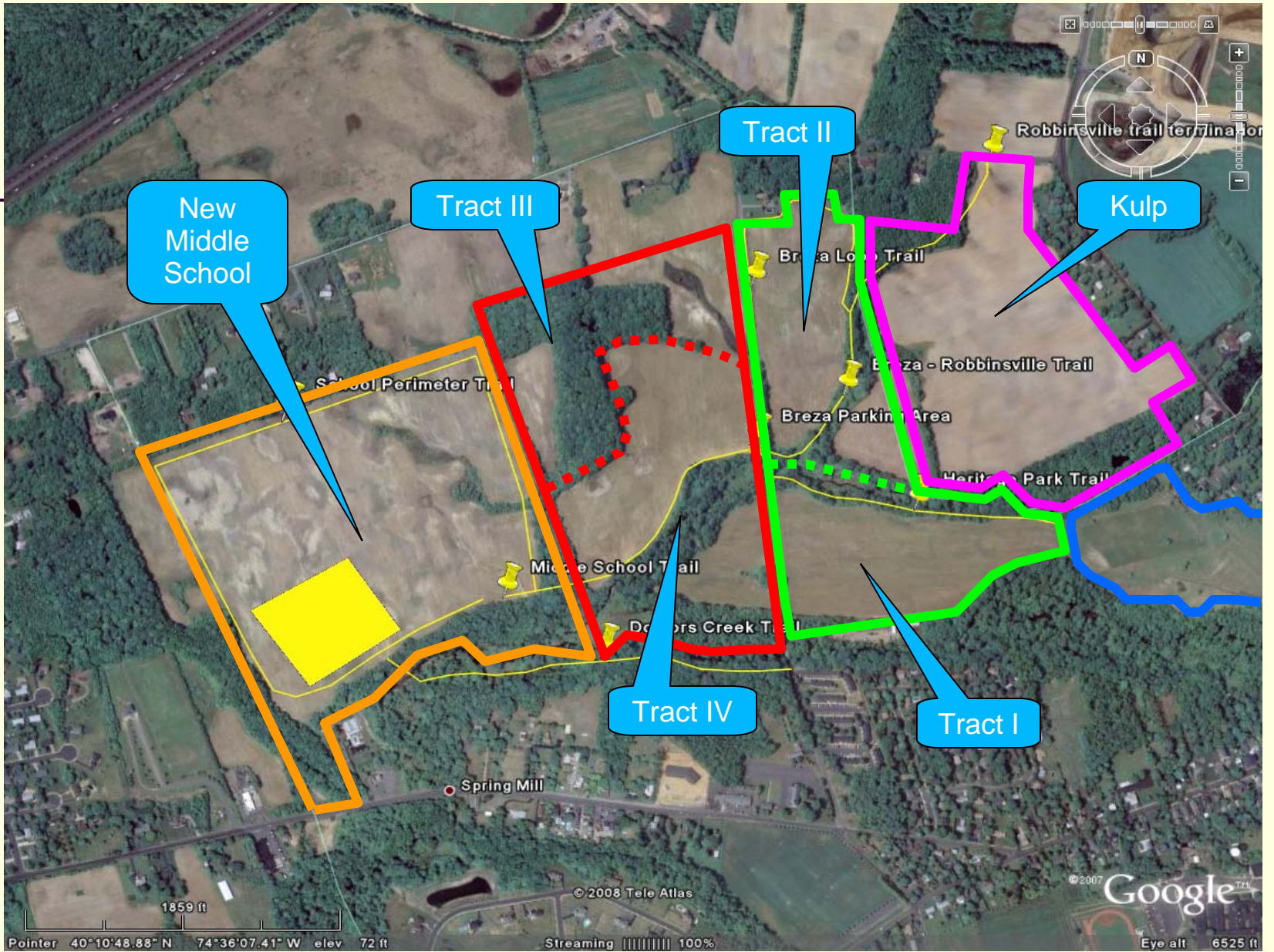
- Connecting links of the trail will be constructed in stages over five to ten years.
- Key trail link (parking area) is located in remaining Breza tract (not yet preserved).
- Connection to middle school will require bridge structure over a ravine containing an unnamed creek.
- Late stage trails may include perimeter trails on school property with school board's buy in.



Scope of Individual Trails

- Heritage Park Trail – 1,970 feet
- Breza Loop – 4,050 feet
- Breza / Robbinsville – 1,150 feet
 - (Robbinsville section only)
- Middle School Trail – 1,875 feet
 - Needs Bridge
- School Perimeter Trail – 6,800 feet
- Doctors Creek Trail – 2,500 feet
 - Needs Bridge

- Total Trail Complex = 3.5 Miles





General Concept

- Trails will be constructed as both woodland trails and field perimeter trails.
- Trails will be constructed so as to not impact ability to continue farming of currently farmed land.
 - In some areas, limited (20') non-cultivated buffers may be required to preserve integrity of constructed trails.
- Trails will be constructed to maximize buffers with residences.
- Small parking areas planned at key connection and termination points.

General Concept

- Trail layout for initial stages of construction is designed to eliminate the need for bridges.
 - This reduces cost and eliminates a lengthy permit process.
- Trails would be designed to minimize tree removal.
- While most of the trails would follow existing creeks, they will be located high on the bank to prevent flooding and washout.
- ADA (Americans with Disabilities Act) requires that we install trails that are of a nature which can be traversed by wheelchairs (motorized or self-propelled), strollers and bicycles.

How will Funding Work?

- National Recreational Trail Program grants are available for up to \$25,000 per municipality requiring a 20% (\$6,250) match by the municipality.
- Both UFT and Allentown may be able to apply for individual grants.
 - \$50,000 plus \$12,500 in matches by UFT and Allentown = \$62,500.
 - We would seek to limit initial phase construction to \$62,500 or less to control the total outlay by each town.

Who will lead this effort?

- Need to finalize management agreement (on the preserved acres along Breza Road) between all vested parties (State, Upper Freehold and Allentown).
- Appoint representative(s) to interact with other organizations such as the Crosswicks-Doctors Creek Watershed Association (a non-profit 501(c) 3 organization).
- Other local interested parties (ex. Boy Scouts).

What do we need to get started?

- Agreement with concept.
- Preservation of the remaining Breza tract.
- Signed Open Space Management Agreement
- Organized lead party designation.
- Agreement from municipalities to match grant (\$6,250).
- Applications for grant.

What do we need to get started?

- Preliminary layout of facilities.
- Bid process to determine scope and affordability.
- Contract firms to begin construction.
 - Possible surveying required.
 - Landscape construction firm.
- Application for next phase of grants.