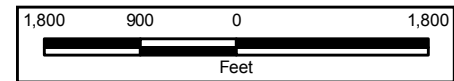
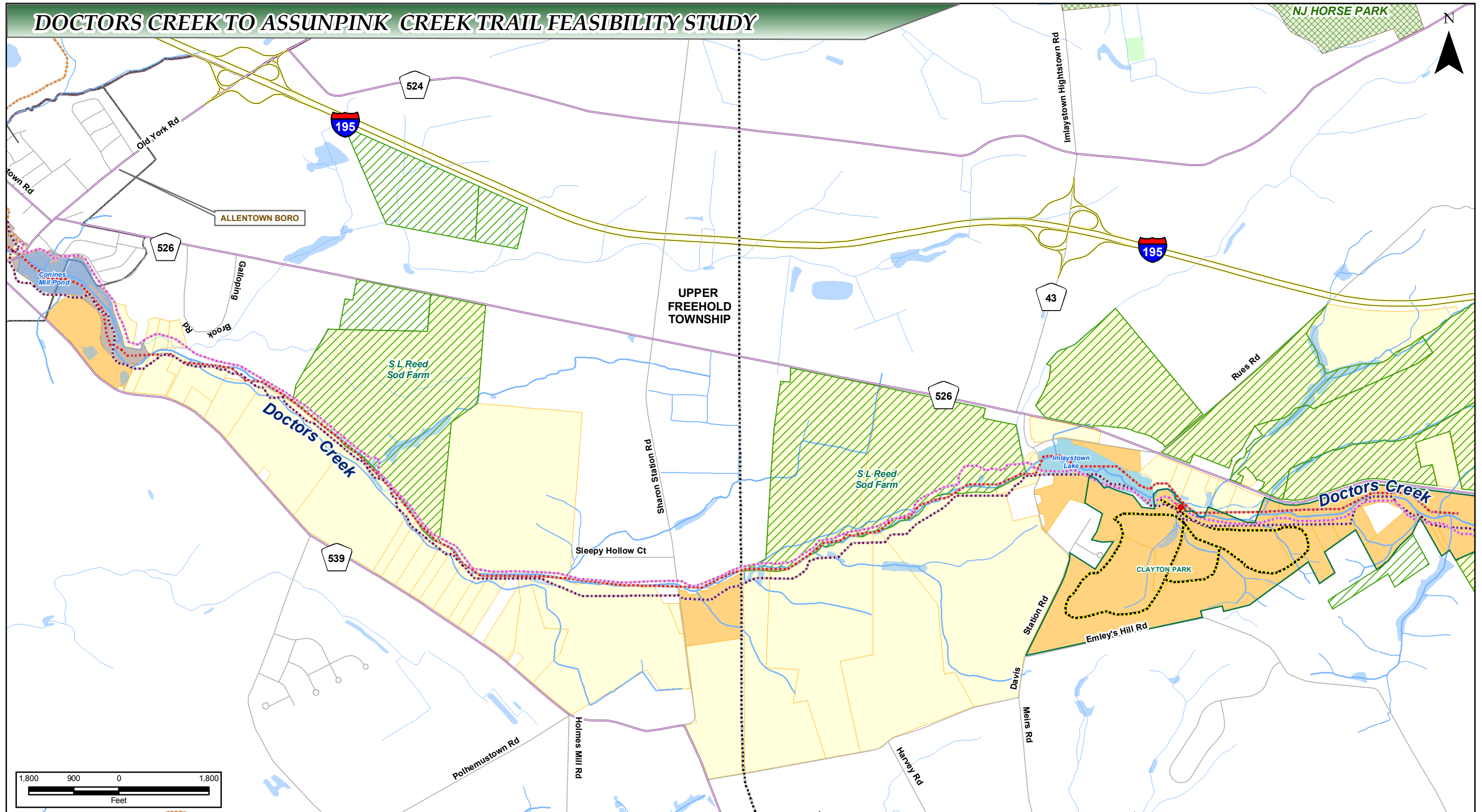


# DOCTORS CREEK TO ASSUNPINK CREEK TRAIL FEASIBILITY STUDY



## MAP 5: STUDY AREA, CENTRAL

Prepared for:  
The Crosswicks Creek  
Doctors Creek  
Regional Greenway  
Planning Group

### Legend

- |  |                         |                 |   |
|--|-------------------------|-----------------|---|
| Streams                                    | Potential Trail Linkage | NJ Turnpike     | Study Area Parcels                          |
| Water Bodies                               | Trail Alternative 1     | Interstates     | County Owned Study Area Parcels             |
| Walnford to Washington Trail               | Trail Alternative 2     | U.S. Highways   | Municipally Owned Study Area Parcels        |
| Crosswick Creek Trail                      | Trail Alternative 3     | State Routes    | State-owned Land                            |
| Monmouth County Union Transportation Trail | Municipal Boundary      | County Highways | Easements                                   |
| Assunpink Trail/ Millstone Twp. Greenway   | County Boundary         | Local Roads     | Preserved County and State Farmland Parcels |
| Clayton Park Trail                         | Railroads               |                 |   |

This map was produced using data obtained from the NJDEP, the NJDOT, the USGS, the Crosswicks-Doctors Creek Watershed Study and participating municipalities and counties. The intended use of the data is for assessing the feasibility of a trail system in the study area. The data are provided for illustrative purposes only. Borton-Lawson makes no representation for the accuracy or currentness of the data as shown.



**Forbes Environmental  
& Land Use Planning**

PROJECT No.: 2005-1860-00  
DATE: June 1, 2007  
COMPILED By: WSB  
CHECKED BY: SJD



Borton  
Lawson  
ENGINEERING